



## AEROMODELE CLUB JEAN MERMOZ COLMAR

### 8<sup>th</sup> International „Colmar Elsass Trophy“ FAI-World cup for radio controlled gliders Class F3B 2020

#### Organizer

Modellbau Club Jean Mermoz Colmar  
member of the French F.F.A.M

#### Contest Directors

Krust René  
Krust Yannick

#### Jury

Krust Jean-Philippe (F)  
NN  
NN

#### Venue and Date

Flying field of the AMC Jean Mermoz near Colmar and Ste Croix en Plaine (name form the airfield: Frohnolz)  
Please watch out for “FAI-Modellflug” signs (see also location map).  
The competition will be held on June 04<sup>th</sup> and 05<sup>th</sup>, 2019  
(Saturday and Sunday).

#### Contest Rules

The FAI rules valid from Januar 2020 for radio controlled gliders class F3B and AMC Jean Mermoz local rules apply.

#### Admission

Holders of a FAI-license valid for 2020 and a sufficient insurance will be admitted.

**Max. competitors 75.**, registration online ([www.f3b.de](http://www.f3b.de))  
started registration on Februar 2020

#### Admitted Frequencies

**26-MHz** (26.815MHz) up to (26.915MHz) and (26.995)  
**27-MHz** (27,045 - 27,095 - 27,145 - 27,195MHz)  
**35-MHz** (35.000MHz) up to (35.050MHz)  
**40-MHz** (40.665MHz) up to (40.695MHz)  
**41-MHz** (41.050MHz) up to (41.200MHz)  
**72-MHz** (72.210MHz) up to (72.490MHz)  
**2,4 GHz**

Other frequencies on request.

#### Classification

There will be following classifications:

- Total individual
- Team

It is foreseen to fly at least three rounds and an additional round (speed) if possible

#### Jury

The protest fee is € 25,00. It will be refunded if the protest was accepted.

#### Entry Fee

The entry fee is € 55,00 for adults and € 30,00 for juniors (been born after 1.1.2002) and for Rookies is €30,00.

**Payment at the latest for the end of week 13 (29.03.2020)**

Please transfer the entry fee until to our account at the Postbank  
(Banque in French) **Türckheim**

#### Food and Beverages

Available on the field.

Live result on our Facebook page:

[www.facebook.com/ColmarElsassTrophy](http://www.facebook.com/ColmarElsassTrophy)

#### Accommodation

Hotels near the flying field:

**Reservations to be made by participants.**

#### Hôtel Au Moulin (5 mns from airfield)

route Herrlisheim 68127 SAINTE CROIX EN PLAINE  
(+33) 03 89 49 31 20

#### Hôtel Restaurant les Maraîchers (8 mns from airfield)

83 route de Bâle 68000 COLMAR  
(+33) 03 89 24 14 79

#### Hôtel Formule 1 (12mns from airfield)

33 rte Strasbourg 68000 COLMAR  
(+33) 08 91 70 52 26

#### Hôtel Restaurant Au coins des Anges (5 mns from airfield)

5, Grand'Rue 68280 LOGELHEIM  
(+33) 03 89 20 99 60

*Hotel IBIS (12mns from airfield), special prices for competitors the room (1 or 2 persons), breakfast from AM6:30*

*Number of this type limited (depend on other competition in the region)*

*13 route de Neuf Brisach 68180 HORBOURG-WIHR*

*(+33) 03 89 23 46 46*

#### Motel Azur (12mns from airfield)

50 route de Strasbourg 68000 COLMAR  
(+33) 03 89 24 18 18

#### Hotel Campanile (12mns from airfield)

8 rue des Metiers 68000 COLMAR  
(+33) 03 89 24 18 18

#### Fasthotel (15mns from airfield)

rue Maria Fiel 68125 COLMAR HOUSSEN  
(+33) 0826 962962

**Camping is permitted in designated areas on the flying field. No electricity during the night.**

Modellbau Club Jean Mermoz

c.o. Yannick Krust

15B rue Ritzenthal

F-68570 WINTZFELDEN

Tel.: (+33) 06 84 37 00 18

e-mail: [ykrust@gmail.com](mailto:ykrust@gmail.com)

**Postbank TÜRCKHEIM AERO-MODELES CLUB JEAN MERMOZ**

( Jean-Philippe KRUST)

BLZ: 17206

Code guichet : 00516

Konto-Nr: 63004199268

Clé RIB : 72

IBAN: FR76 1720 6005 1663 0041 9926 872

SWIFT Code: AGRIFRPP872

#### **For Swiss People only**

Possibility to send to a Swiss Konto, on request per e-mail : **70Chf**

#### **Program:**

##### **Friday, April 03<sup>rd</sup> 2020**

From 2:00 pm Registration and training possible

##### **Saturday, April 04<sup>th</sup> 2020**

From 7:30 am Registration, hand-out of contest documents.

8:15 am Briefing

8:30 am Start of contest

ca. 7:00 pm End of first contest day

##### **Sunday, April 05<sup>h</sup> 2020**

From 7:30 am Antenna impound

8:00 am Continuation of contest

ca. 4:00 pm End of contest

From Mulhouse or Strasbourg, on Highway A35, take the exit highway number 27, and now, take the direction Colmar. After the 2<sup>nd</sup> Traffic-circle, after approximately 1km, turn right





OTHER WAY (second possibility)

Terrain du Frohnolz

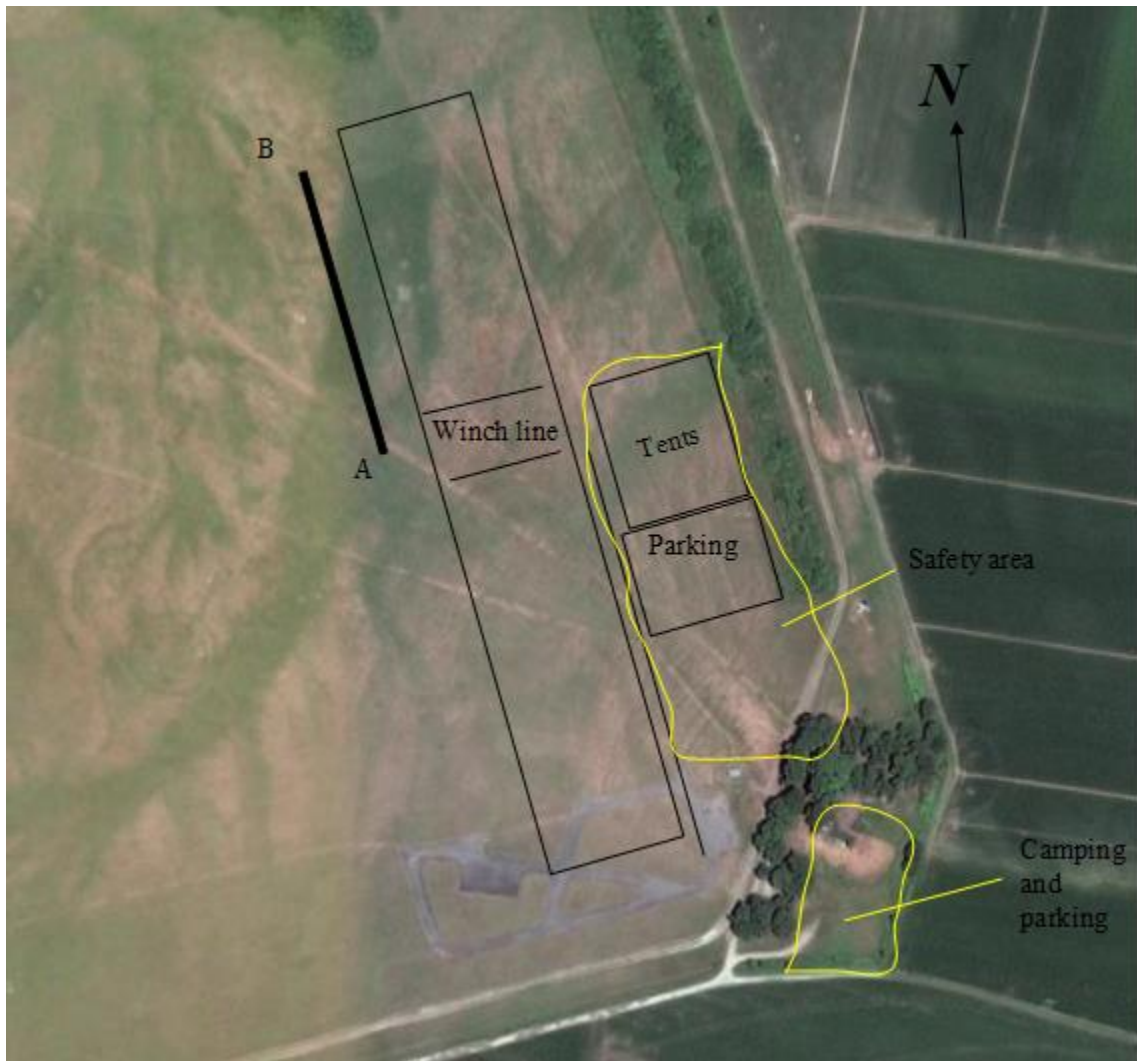
GPS : 48 02 30 N - 07 23 13 E

Colmar



Mulhouse

# Airfield



# COLMAR ELSASS TROPHY 2019

## **-Local rules**

In case of two line set up in both directions, all landings have to be made in the west of the two lines. Main direction on the line, South-north

## **-Positions of winchs and turn-arounds**

The positions of the winches have been allocated by the organizer based on a random process.

## **-Preparation time**

Preparation time of 5 minutes will be officialy announced only for the first group of competitors of each task, all following competitors will be called for preparation in due time.

## **-Duration (working time 12 minutes)**

There will be no official timekeepers for any pilot. That means that every pilot is responsible himself for timekeeping and recording the landing points.

In order to ensure fair results, however, the flight times of some randomly selected pilots in every group will be checked by officials. In case of a deviation of more than 3 seconds in favour of the pilot, the score for the respective flight will be 0 points. The same applies to incorrect declaration of the landing points.

After completion of the flight, every pilot or his helper has to inform the official at the score desk near the CD-tent about the flight time and the landing points.

If someone flies in the safety area, there will be first a warning and in case of recurrence the pilot gets 300 penalty points.

## **-Distance (working time 7 minutes)**

Straight before the start, each pilot or his personnel helper must to announce clearly his signal, such as «ALPHA », « BRAVO ».....or the color by Flag

The model must not be released before confirmation of the flightline manager

Relaunches have to be announced clearly and audible

The final landing has to be made on the western side of the winch lines

If someone flies in the safety area, there will be first a warning and in case of recurrence the pilot gets 300 penalty points.

## **-Speed (Working time 3 minutes)**

The speed task will be carried out in a « seamless » manner, i.e the working time of each following pilot starts automatically as soon as the model of the preceding pilot leaves the course  
In justified individual cases or organisation problems, the pilot may obtain a « separate » working.  
In this case, the manager announced the new working time during the competition. Depending on weather conditions and timing it is up to cd s decision, whether the reverse starting order of current results or the originally starting order, if applicable with group scoring, will be used.

**Further safety rules are announced at the briefing or answer if you have questions.**